

ÇUKUROVA

Makina İmalat ve Ticaret A.Ş.

WHEEL LOADER



980



FEATURES

Improved Performance

CUKUROVA Wheel Loaders are the ideal combination of concentrated power, safety and extreme user-friendliness. Ergonomically located controls are within easy reach of the operator, provides operating comfort and increase productivity.

Powerful Engine

Powering it with John Deere turbocharged diesel engine offers world class performance and complies with all relevant environmental regulations. It has low noise, smooth and soft engine run with 100% dynamically balanced crankshaft. Automatic belt tensioner and replaceable wet type cylinder liners make service at ease.

Hydraulic System

Hydraulic pump with 2 variable displacement axial piston pump increases machine performance and pump life. It has capability of flowrate generation according to your request. Depends on the load increase, power requirement of pump is balanced as optimum with engine power, and engine stalling is prevented. This provides high efficiency and long life to the machine.

Roomy ROPS/FOPS Cab

Specially designed ROPS/FOPS cab provides perfect operating comfort, excellent visibility with tinted safety glass.

A well designed dash within reach

Sitting in the driver's seat is a lot like sitting in a automobile. The tiltable front dash provides all switches and controls to be closer to the driver. There's no stretching, so there's less fatigue.

Steering Column

The steering column can be adjusted to an infinite amount of positions for maximum comfort, increased belly room and improved visibility of all indicators by simply pressing the quick-release hand lever.

Easy Cab Entry

Sculpted, self-cleaning steps and a full-size grab bar provide an extra measure of safety getting in and out of the cab. Partial opening of cab doors.

Serviceability

Optimized component mounting

The fuel and hydraulic tanks, battery box, hydraulic system and engine are mounted to provide easy access and integration.

Ground level access of service points and sight gauges for easy maintenance.

Extended life of filters&hydraulic oil.

Monitoring systems and dealer support reduce unexpected downtime.

All the hatches are large and easy to open.

Pressure check connections and quickcouplings are conveniently grouped for fast and simple inspection.

CUKUROVA provides warranties and service systems that are tailored to your machine and suited to the toughest imaginable operating conditions, thereby reducing downtime and maximizing uptime.

Long lubrication intervals mean more time for productive work.

Ground level daily check and grease point access makes life easier and safer.

Easy service accessibility for minimized downtime.



TECHNICAL SPECIFICATIONS

Engine

- Heavy duty design, high torque capability, powerful Cummins engine.
- Low fuel consumption and low maintenance cost.
- Environment friendly.
- Smooth engine operation with balancer shafts.
- Poly-vee fan drive with automatic belt tensioner.
- Dynamically balanced crankshaft.
- Replacable, wet-type cylinder liners.
- Dry type air cleaner with primary and safety elements.

Engine Stage III Stage V

Brand	JOHN DEERE	CUMMINS
Model	6068HF285	B6.7 Industrial
Type	Water cooled, 4 cycle, 6 cylinders in-line direct injection, turbocharged	
Rated power	225 HP 168 KW	225 HP 168 KW
Rated speed	2200 rpm	
Displacement	6,8 L.	6,7 L.
Bore and stroke	106x124 mm	107x124 mm
No of cylinders	6	
Max. torque	1025 Nm @ 1400 rpm	1186 Nm @ 1400 rpm
Cooling	Water cooled	

Electrical System Stage III Stage V

Battery	12x2V / 120 Ah	2x12V 120 Ah
Starter	24V / 7kW	24V 7,8 kW
Alternator	24V / 100A	24V / 70A

Hydraulic System

- Closed Center System.
- Load sensing with axial piston pump.
- Hydraulic operated control valves enable operators to have smooth control and get precise movement.

System Type	Closed Center
Hydraulic pump	Load sensing with axial piston pump
Max. Flow	306 lt / min
Max. Press	280 bar

Hydraulic Cycle Time

Raise	5,6 sec
Dump	3,35 sec
Lower	3,75 sec
Total	13,7 sec



Lift Cylinder / Double Acting

Bore and stroke	160x742 mm
-----------------	------------

Tilt Cylinder / Double Acting

Bore and stroke	180x525 mm
-----------------	------------

Cooling	Hydraulic oil cooler
Loader Control	Hydraulic joystick control

Drive Train Transmission

- ZF powershift transmission.
- Transmission kick-down switch.
- Low noise and low internal speeds.
- High gear contact ratio.
- All helical gear desing.
- Integrated clutch and lube oil supply.
- Vertical mount spin-on pressure filter.

Make	ZF
Type	Full Powershift, electronic autoshift
Max Drawb. Pull	178 kN



TECHNICAL SPECIFICATIONS



Travel Speeds

1st (forward/reverse)	7,0/7,30 km/h
2nd (forward/reverse)	13,00/13,70 km/h
3rd (forward/reverse)	26,00/27,30 km/h
4th (forward)	40,00 / km/h
Cooling	Transmission oil cooling

Axles:

ZF Front Axle and Rear Axles

- High input torque with planetary design.
- Self adjusting high torque internal wet multi disc service brake.
- Limited slip differential.
- 24° total oscillation on rear axle.

Brakes

- Self adjusting high torque internal wet type multi disc service brake.
- Hydraulic foot operated service brake acted on four wheels.
- Electro-hydraulically actuated spring-loaded caliper disc brake.

2 wheel / 4 wheel	4 wheel
Service type	Hydraulic wet multi disc
Parking type	Electro-hydraulic caliper disc brake

Steering

- Hydrostatic power steering.
- Load sensing system.

Steering Type	Articulated frame
Angle of frame articulation	40°
Outside turning radius from tire	5900 mm
Outside turning radius from bucket	6830 mm

Loader Attachment

Bucket Capacity	3,5 m³
Breakout Force	187 kN
Bucket width	3000 mm
Tipping load (straight)	15739 kg
Tipping load (40° turn)	13900 kg

Tyres

Front	23,5-25/20 PRL3
Rear	23,5-25/20 PRL3

Weights

Operating Weight	19500 kg
------------------	----------

TECHNICAL SPECIFICATIONS

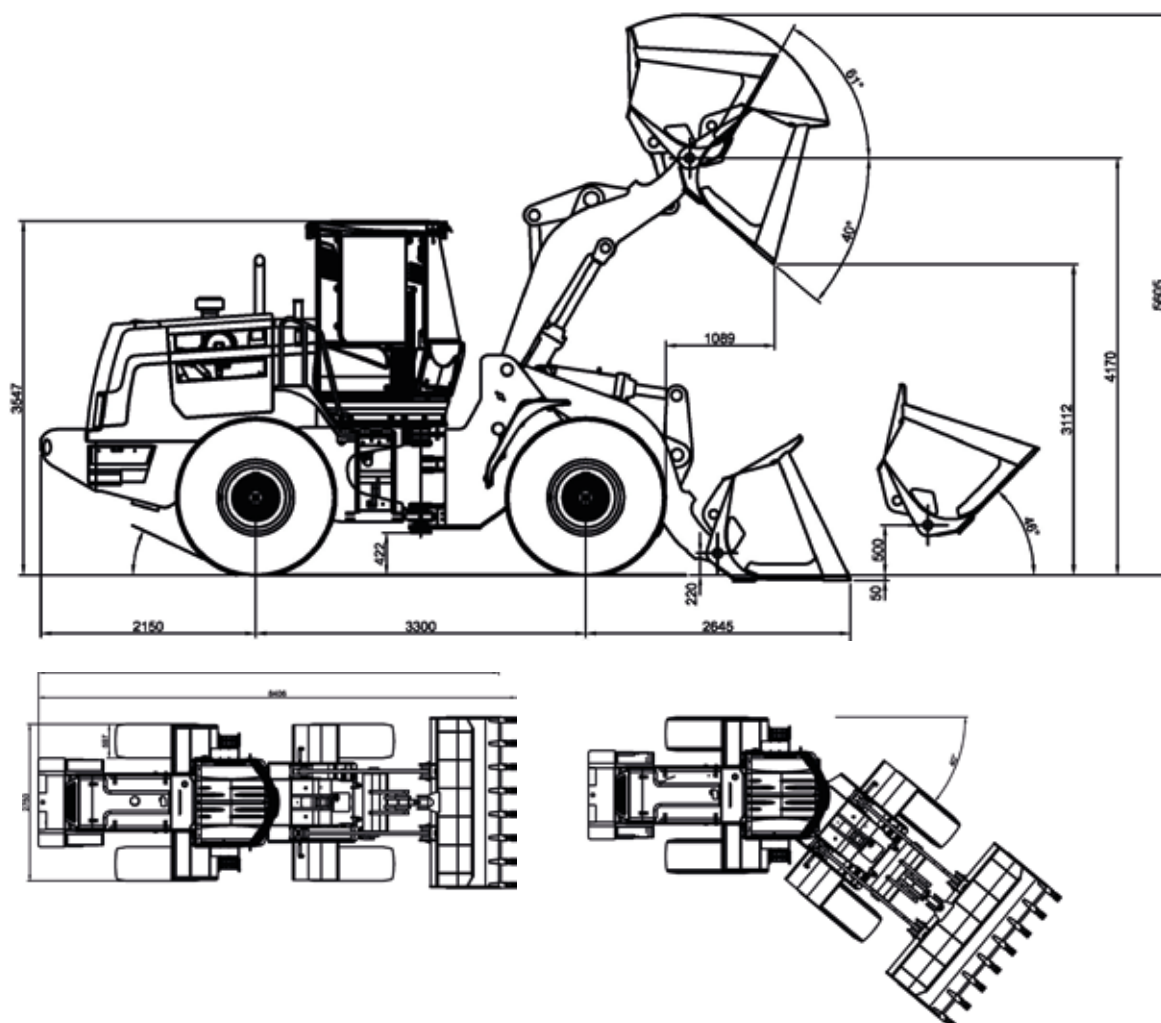
Cab

- ROPS (ISO 3741) - Fops (ISO 3449) tinted safety glass giving total visibility, roomy and comfortable.
- Seat; adjustable to operator's weight.
- Heating and ventilation; fresh air heater/blower unit, full heating control system.
- Air condition as optional.
- Fully equipped instrument panels with the latest technology, audible and visual warnings on main functions.
- Tilt, adjustable steering column Excellent visibility with radiused tinted safety glass.
- Ergonomic controls.

Capacities

Liters

Engine oil	14
Cooling system	40
Fuel tank	280
Hydraulic tank	150
Transmission oil	27
Front axle	35
Rear Axle	35



ACCESSORIES

Standard Equipment Engine

- Air filter, dry type and radial seal
- Service indicator warning lamp
- Turbocharged

Drive Train

- 40 km/h gearbox (full powershift)
- Front axle, limited slip differential
- Rear axle, limited slip differential
- Shaft guard
- Service brakes enclosed wet disc full hydraulic and parking brakes electro-hydraulically actuated spring loaded caliper disc brake
- Transmission, 4F/3R autoshift single control and kick-down switch.
- Transmission neutralizer

Loader Attachment

- Automatic lift kick out system
- Automatic return to dig system

Electrical System

- Battery, 24 V/ (12 V 120 Ah) x2 • Front headlights
- Master switch
- Visual and audible warning systems on main functions
- Warning horn

ROPS ve FOPS Cab

- Coat hook
- Door ventilation openers
- Front windshield waster and wipers
- Fully equipped instrument panel
- Interior light
- Left Side door with lock
- Mirrors, interior and exterior (2)
- Radio /Cassette Player
- Rotating beacon (detachable)
- Sunvisor
- Suspended adjustable seat with seat belt, armrest and headrest
- Steering wheel spinner knob
- Tilttable steering column
- Worklights, 2 front - 2 rear

Optional Equipment

- Air Condition
- Fork attachment
- Additional front hydraulic line
- Soft material bucket
- Hydraulic or mechanic snow blade
- Skeleton bucket
- Timber grab
- Rock bucket
- Hydraulic or mechanic quick coupler



GALLERY



ÇUKUROVA

Makina İmalat ve Ticaret A.Ş.



Çukurova Makina İmalat ve Ticaret A.Ş.
Şahin Mh. Sait Polat Blv. 322 / A 33470 Tarsus / Mersin / TÜRKİYE



+90 324 616 26 78



info@cumitas.com - www.cumitas.com