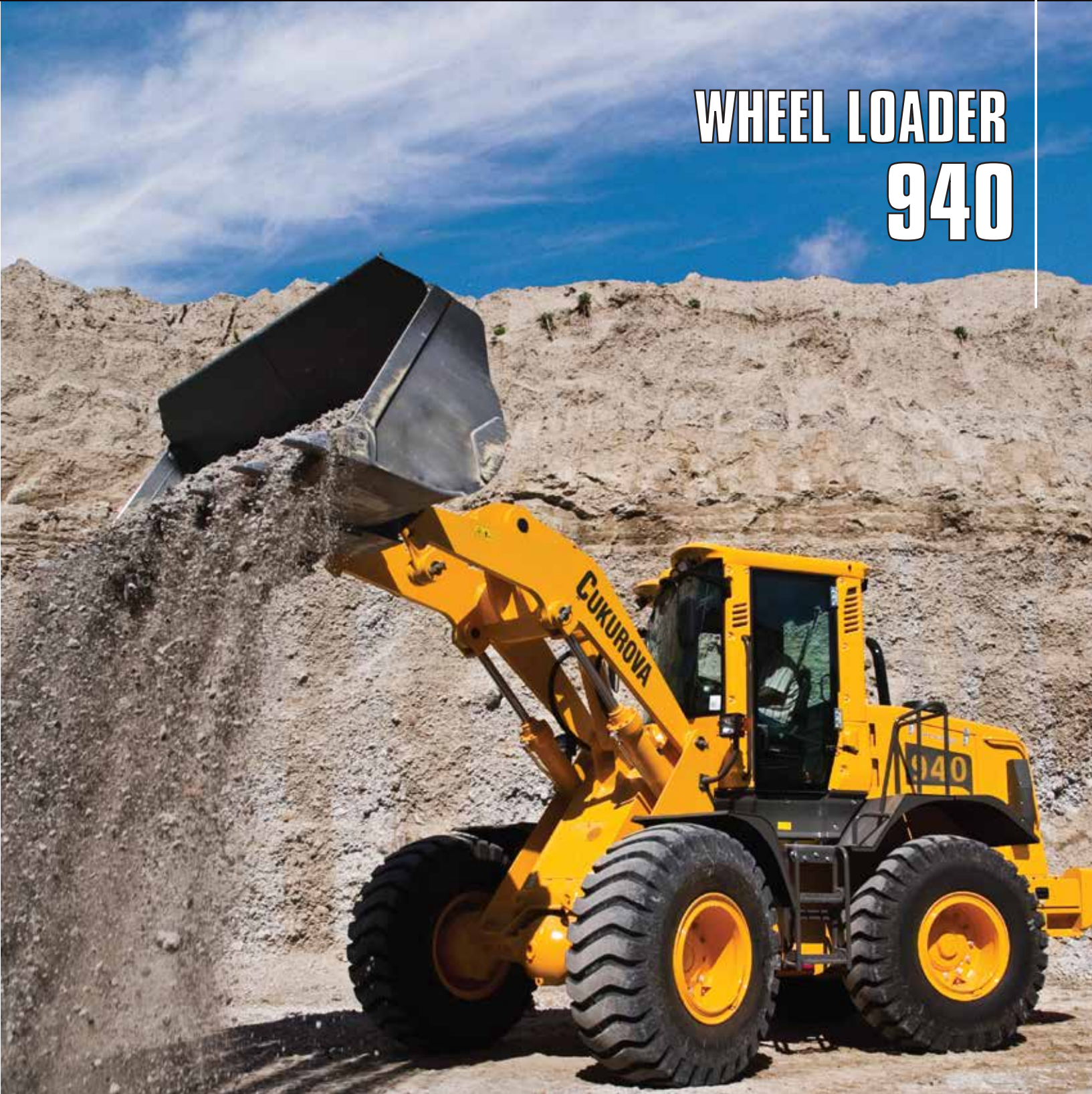


ÇUKUROVA

“Reaching Further...”

WHEEL LOADER 940



Remove Ruins For Treasures



Features

Improved Performance

ÇUKUROVA Wheel Loaders are the ideal combination of concentrated power, safety and extreme user-friendliness. Ergonomically located controls are within easy reach of the operator, provides operating comfort and increase productivity.

Powerful Engine

Powering it with John Deere turbocharged diesel engine offers world class performance and complies with all relevant environmental regulations. It has low noise, smooth and soft engine run with 100% dynamically balanced crankshaft. Automatic belt tensioner and replaceable wet type cylinder liners make service at ease.

Hydraulic System

Hydraulic pump with variable displacement axial piston pump increases machine performance and pump life. It has capability of flowrate generation according to your request. Depends on the load increase, power requirement of pump is balanced as optimum with engine power, and engine stalling is prevented. This provides high efficiency and long life to the machine.

Roomy ROPS / FOPS Cab

Specially designed ROPS/FOPS cab provides perfect operating comfort, excellent visibility with tinted safety glass.

A well designed dash within reach

Sitting in the driver's seat is a lot like sitting in a automobile. The tiltable front dash provides all switches and controls to be closer to the driver. There's no stretching, so there's less fatigue.



Steering Column

The steering column can be adjusted to an infinite amount of positions for maximum comfort.

Easy Cab Entry

Sculpted, self-cleaning steps and a full-size grab bar provide an extra measure of safety getting in and out of the cab. Partial opening of cab doors.



CE marked - All safety measurements are taken through the Machinery Directives 2006/42/EC

Serviceability

Optimized component mounting

The fuel and hydraulic tanks, battery box, hydraulic system and engine are mounted to provide easy access and integration.

Ground level access of service points and sight gauges for easy maintenance.

Extended life of filters&hydraulic oil.

Monitoring systems and dealer support reduce unexpected downtime.

All the hatches are large and easy to open.

CUKUROVA provides warranties and service systems that are tailored to your machine and suited to the toughest imaginable operating conditions, thereby reducing downtime and maximizing uptime.

Long lubrication intervals mean more time for productive work.

Ground level daily check and grease point access makes life easier and safer.

Easy service accessibility for minimized downtime.

Engine

- Heavy duty design, high torque capability, powerful JOHN DEERE engine.
- Low fuel consumption and low maintenance cost.
- Environment friendly.
- Smooth engine operation with balancer shafts.
- Poly-vee fan drive with automatic belt tensioner.
- Dynamically balanced crankshaft.
- Replacable, wet-type cylinder liners.
- Dry type air cleaner with primary and safety elements.

Brand	John Deere
Model	6068HF285, Tier III
Type	Water cooled, 4 cycle, 6 cylinders in-line, direct injection, turbocharged
Rated Power	173 hp / 129 kW
Rated Speed	2200 rpm
Displacement	6,8 liters
Bore And Stroke	106x127 mm
No Of Cylinders	6
Max. Torque	714 Nm
Balancer shaft	100% Balanced
Cooling	Water cooled

Electrical System

Battery	2x12V 120 Ah
Starter	24V / 7 kW
Alternator	24V / 50 A

Hydraulic System

- Closed Center System.
- Load sensing with axial piston pump.
- Hydraulic operated control valves enable operators to have smooth control and get precise movement.

System type	Closed center
Hydraulic pump	Load sensing with axial piston pump
Max. Flow	176 l/min.
Max. Press.	230 bar

Hydraulic cycle time

Raise	6,9 sec
Dump	2,35 sec
Lower	4,59 sec
Total	13,84 sec

Lift cylinder / Double acting

Bore and stroke	130 x 696 mm
-----------------	--------------

Tilt cylinder / Double acting

Bore and stroke	140 x 540 mm
-----------------	--------------

Cooling

Hydraulic oil cooler

Loader Control

Hydraulic joystick control

Drive Train

Transmission:

- ZF powershift transmission.
- Transmission kick-down switch.
- Low noise and low internal speeds.
- High gear contact ratio.
- All helical gear desing.
- Integrated clutch and lube oil supply.
- Vertical mount spin-on pressure filter.

Make

ZF

Type

Full auto-shift and automatic kick down

Travel Speeds

1st (Forward/reverse)	6,83 / 7,20 km/h
2nt (Forward/reverse)	13,30 / 14,00 km/h
3rd (Forward/reverse)	23,50 / 24,50 km/h
4th (Forward)	40,00 / - km/h
Cooling	Transmission oil cooler

Axles:

ZF Front Axle

- High input torque with planetary design.
- Self adjusting high torque internal wet multi disc service brake.
- Limited slip differential.
- 24° total oscillation on rear axle

TECHNICAL SPECIFICATIONS



- Illustrations and data may differ from standard equipment.
 - Specifications are subject to change without notice.
 - See your CUKUROVA dealer for available options.

ZF Rear Axle

- High input torque with planetary desing.
- Self adjusting high torque internal wet multi disc service brake.
- Limited slip differential.
- 24° total oscillation on rear axle

Brakes

- Self adjusting high torque internal wet type multi disc service brake.
- Hydraulic foot operated service brake acted on four wheels.
- Electro-hydraulically actuated spring-loaded caliper disc brake.

2 wheel / 4 wheel	4 wheel
Service type	Hydraulic wet multi-disc
Parking type	Electro-hydraulic caliper disc brake

Steering

- Hydrostatic power steering.
- Load sensing system.

Steering Type	Articulated frame
Angle of frame articulation	33°
Outside turning radius from tire	6150 mm
Outside turning radius from bucket	6650 mm

Loader Attachment

Bucket capacity	2,5 m ³
Breakout Force	132,8 kN
Tipping load (straight)	11500 kg
Bucket width	2600 mm
Tipping load (33° turn)	10570 kg

Tires

Front	20,5-25 / 16 PRL3
Rear	20,5-25 / 16 PRL3

Weights

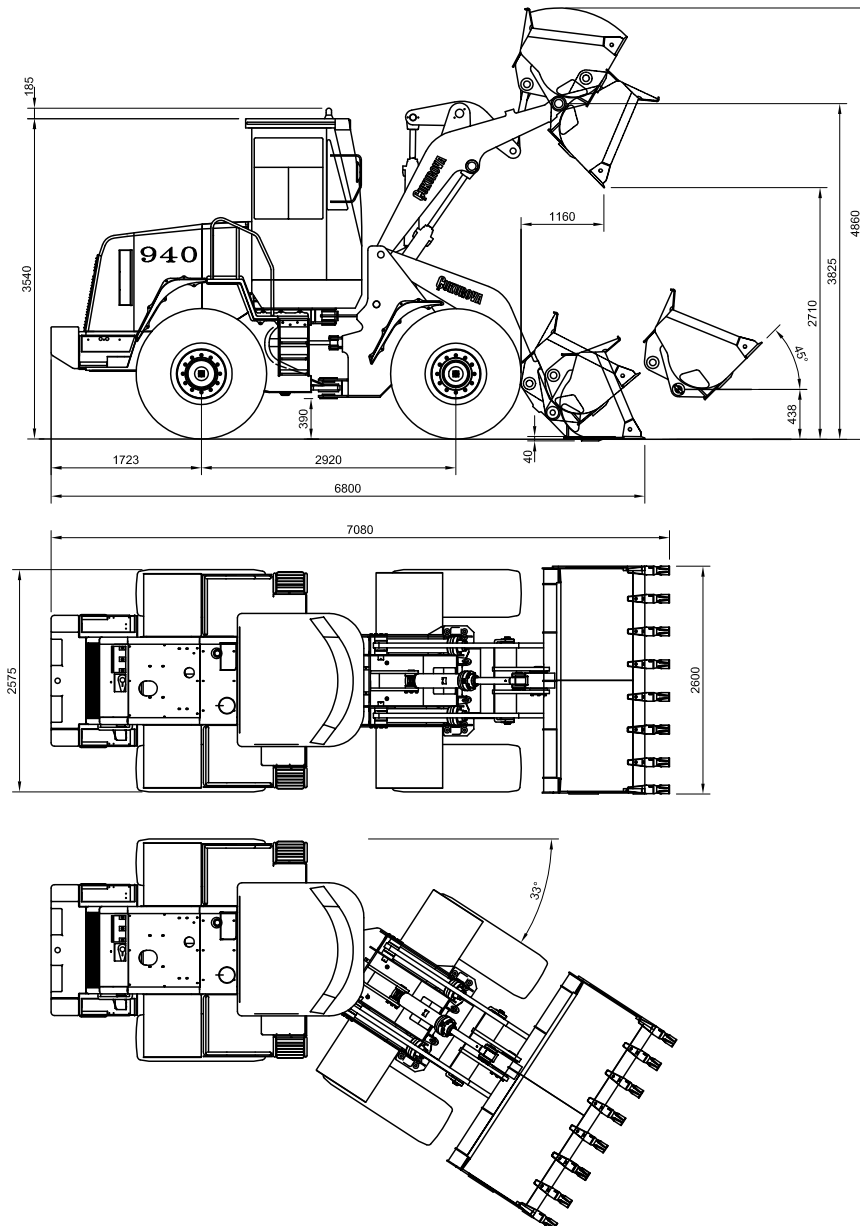
Operating Weight	13940 kg
------------------	----------

Cab

- ROPS (ISO 3741) - Fops (ISO 3449) tinted safety glass giving total visibility, roomy and comfortable.
- Seat; adjustable to operator's weight.
- Heating and ventilation; fresh air heater/blower unit, full heating control system.
- Air condition as optional.
- Fully equipped instrument panels with the latest technology, audible and visual warnings on main functions.
- Tilt, adjustable steering column Excellent visibility with radiused tinted safety glass.
- Ergonomic controls.

Capacities

	Liters
Engine Oil	19
Cooling System	38
Fuel Tank	225
Hydraulic Tank	118
Transmission oil	21
Front Axle	34
Rear Axle	23



ACCESSORIES



Standard Equipment Engine

- Air filter, dry type and radial seal
- Service indicator warning lamp
- Turbocharged

Drive Train

- 40 km/h gearbox (full powershift)
- Front axle, limited slip differential
- Rear axle, limited slip differential
- Shaft guard
- Service brakes enclosed wet disc full hydraulic and parking brakes electro-hydraulically actuated spring - loaded caliper disc brake
- Transmission, 4F/3R autoshift single control and kick-down switch.
- Transmission neutralizer

Loader Attachment

- Automatic lift kick out system
- Automatic return to dig system

Electrical System

- Battery, 24 V/ (12 V 120 Ah) x2
- Front headlights
- Master switch
- Visual and audible warning systems on main functions
- Warning horn

ROPS ve FOPS Cab

- Coat hook
- Door ventilation openers
- Front windshield waster and wipers
- Fully equipped instrument panel
- Interior light
- Left Side door with lock
- Mirrors, interior and exterior (2)
- Radio /Cassette Player
- Rotating beacon (detachable)

- Sunvisor
- Suspended adjustable seat with seat belt, armrest and headrest
- Steering wheel spinner knob
- Tilttable steering column
- Worklights, 2 front - 2 rear

Optional Equipment

- Air Condition
- Fork attachment
- Additional front hydraulic line
- Soft material bucket
- Hydraulic or mechanic snow blade
- Skeleton bucket
- Timber grab
- Rock bucket
- Hydraulic or mechanic quick coupler



With a keen awareness of its international positioning, as a pre-requisite of success and growth in a truly global era, Cukurova Makina manages collaborations with leading international partners in Turkey and abroad aiming at long-term benefit of our customers, business partners and staff. These cooperative efforts aim to achieve the highest quality of products and service delivery by Cukurova Makina where it has presence in global.

Notes:

- 1-The products in this catalogue are CE marked, all safety measurements are taken through the Machinery Directives 2006/42/EC
- 2- Illustrations and data may differ from standard equipment.
- 3- Specifications are subject to change without notice.
- 4- See your ÇUKUROVA dealer for available options.