

# ÇUKUROVA

“Reaching Further...”

## EXCAVATOR CMI 723



**Knock The Earth For Abundance**





## Features

### Powerful Engine

Powering it with John Deere turbocharged diesel engine offers world class performance and complies with all relevant environmental regulations. It has low noise, smooth and soft engine run with 100% dynamically balanced crankshaft. Automatic belt tensioner and replaceable wet type cylinder liners make service at ease.

### Hydraulic System

Hydraulic pump with 2 variable displacement axial piston pump increases machine performance and pump life. With a negative control feature, it has capability of flowrate generation according to your request. Depends on the load increase, power requirement of pump is balanced as optimum with engine power and engine stalling is prevented. This provides high efficiency and long life to the machine.

### Stronger X type frame

From its stronger X type frame specially designed for the harsh work of the jobsite to its powerful and fuel efficient engine, Cukurova 723 model excavator delivers all the power you need to boost your profit.

### Hydraulic Travel Group

Travel hydromotor is 2 speed axial piston type, speed selection depends on variable load. For stable travel, there is counter balance valve, and heavy-duty type reduction gear used for the hydromotor travel system.



## Roomy FOPS Cab

### A well designed dash within reach

The dashboard is fully equipped with the latest technology and tools, the arrangement of controls are within easy reach, there is no stretch and fatigue, the audible and visual warning on main functions guide operators for failures.

### Easy Cab Entry

Sculpted, self-cleaning steps and a full-size grab bar provide an extra measure of safety getting in and out of the cab.



# FEATURES



## Easy Sliding Front Window

Front window can be opened by sliding towards to cab ceiling, while superior fresh air circulation is provided in the cab, tinted safety glass improves visibility and sun visor protects operator against strong sunlight and ensures clear vision.

## BUCKET CAPACITIES:

Widht: 600 mm	Capacity : 0,43m <sup>3</sup>
Widht: 750 mm	Capacity : 0,54m <sup>3</sup>
Widht: 900 mm	Capacity : 0,70m <sup>3</sup>
Widht: 1050 mm	Capacity : 0,85m <sup>3</sup>
Widht: 1200 mm	Capacity : 1,00m <sup>3</sup> .. Standard
Widht: 1400 mm	Capacity : 1,20m <sup>3</sup>

CE marked - All safety measurements are taken through the Machinery Directives 2006/42/EC



## Engine

- Heavy duty design, high torque capability, powerful JOHN DEERE engine.
- Low fuel consumption and low maintenance cost.
- Environmental, Stage III A
- Low noise, smooth and soft engine run with %100 dynamically balanced crankshaft.
- Automatic belt tensioner.
- Replacable, wet type cylinder liners.
- Dry type air cleaner with primary and safety elements.

Brand	John Deere
Model	6068HF285, Tier III

Type	Water cooled, 4cycle, 6 cylinders in-line, direct injection,turbocharged
------	--

Rated Power	156 hp /116 kW
Rated Speed	2200 rpm
Displacement	6,8 liters
Bore And Stroke	106x127 mm
No Of Cylinders	6
Max. Torque	667 Nm / 1500 rpm
Balance	100% Balanced
Cooling	Water cooled

### Electrical System

Battery	2x12V 120 Ah
Alternator	24V/50A

## Hydraulic System

- Open Centre System
- With axial piston pump application, softer and sensitive control possibility, low operation cost.
- Power modulated, silent.
- Elastic hydraulic hoses resist high pressure.

## Main Pump

Type	2 variable displacement axial piston pumps
Max. Flowrate	2x246 l/min.
Pilot Pump	22 l/min.

## Hydraulic motors

Travel	Two speed axial piston motor with braking valves
Swing	Axial piston motor with automatic brake

## Hydraulic cylinders

No. of cylinder	bore x rod x stroke	
	Boom: 2	125x85x1325 mm
	Arm: 1	140x100x1640 mm
	Bucket: 1	125x85x1060 mm

## Working Pressures

Attachments (Boom,Arm,Bucket)	320 kgf / cm <sup>2</sup>
Power Boost (Boom,Arm,Bucket)	350 kgf / cm <sup>2</sup>
Travel	350 kgf / cm <sup>2</sup>
Swing Circuit	220 kgf / cm <sup>2</sup>
Pilot Circuit	40 kgf / cm <sup>2</sup>

## Undercarriage

Centre Frame	X Type Lower Frame Construction
Track Frame	Pentagonal Box Type
No. Of Shoes	2x49
No. Of Track Rollers	2x9
No. Of Carrier Rollers	2x2
No. Of Rail Guards	2x2
Track Tensioning	Hydraulic track adjuster with shock absorbing spring

## Swing System

Swing Motor	Axial Piston Motor
Swing Reduction	Planetary Gear Reduction
Swing Brake	Hydraulic Disc Type
Swing Speed	11 rpm
Swing bearing lubrication	Grease-bathed

## COOLANT & LUBRICANT CAPACITY

	Liters
Fuel tank	400
Hydraulic Tank	175
Hydraulic system	310
Travel motor	2x3,3
Swing motor	6
Engine	19

# TECHNICAL SPECIFICATIONS



- Illustrations and data may differ from standard equipment.  
 - Specifications are subject to change without notice.  
 - See your CUKUROVA dealer for available options.

## Breakout Forces

Arm Length	2940 mm
Bucket	13110 kgf
Bucket(Boost)	13500 kgf
Arm	12020 kgf
Arm (Boost)	12910 kgf

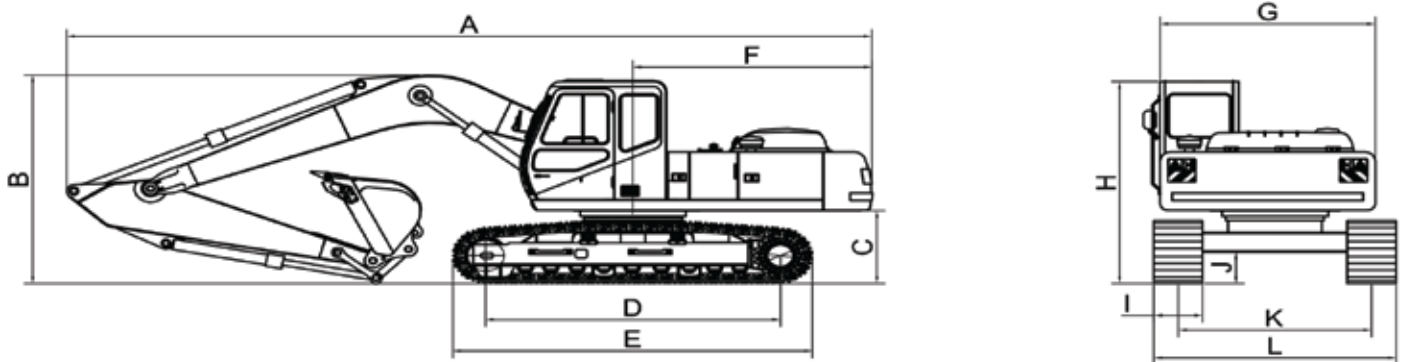
## Weights

Operating Weight	23.000 kg
------------------	-----------

## Drives and Brakes

Drive Method	Fully hydrostatic type
Drive Motor	2 Speed Axial Piston Motor
Controls	By pedals and levers
Reduction System	Planetary Reduction Gear
Max. Travel Speed (High/Low)	5,1 / 3 km/h
Max. Drawbar Pull	19200kgf
Gradeability	35° (%70)
Parking Brake	Hydraulic multi disc type



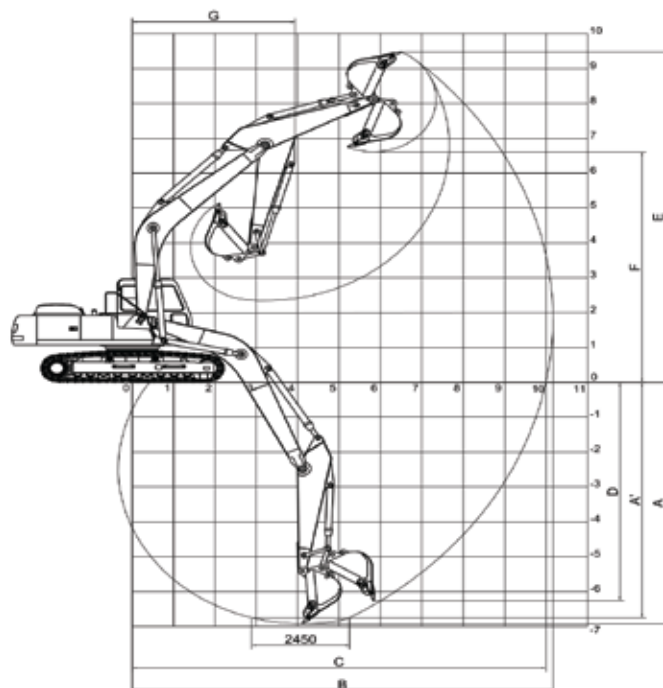


## DIMENSIONS

A	OVERALL MACHINE LENGTH	9.946 mm
B	OVERALL MACHINE HEIGHT	3.040 mm
C	UPPERSTRUCTURE GROUND CLEARANCE	1.065 mm
D	CENTRE/CENTRE (IDLER TO SPROCKET)	3.640 mm
E	TRACK LENGTH	4.442 mm
F	TAIL SWING RADIUS	2950 mm
F'	DISTANCE, SWING CENTRE TO REAR END	2905 mm
G	WIDTH OF UPPER STRUCTURE	2.660 mm
H	CAB HEIGHT	2.946 mm
I	TRACK SHOE WIDTH (STANDARD)	600 mm
J	GROUND CLEARANCE	456 mm
K	TRACK GAUGE	2.390 mm
L	TRACK OVERAL WIDTH (SHOE 0,6M)	2.990 mm

## OPERATING DIMENSIONS

	BOOM LENGTH	5.800 mm
	ARM LENGTH	2.940 mm
A	MAX. DIGGING DEPTH	6.925 mm
A'	MAX. DIGGING DEPTH (AT 2450 MM DISTANCE)	6.750 mm
B	MAX. DIGGING REACH	10.170 mm
C	MAX. DIGGING REACH ON GROUND	10.000 mm
D	MAX. VERTICAL WALL DIGGING DEPTH	6.265 mm
E	MAX. DIGGING HEIGHT	9.485 mm
F	MAX. DUMPING HEIGHT	6.615 mm
G	MIN. SWING RADIUS	3.937 mm



# ACCESSORIES



## Standard Equipment

### Attachments

- Hydraulic operated joystick control
- 1200 mm standard bucket
- 2,94 m, arm

### Electrical System

- Battery, 24 V, 120 Ah
- Front head lights
- Temperature, air filter clogging indicator
- Visual and audible warning systems on main functions
- Warning horn

### Engine System

- Air cleaner, dry type and radial seal
- Alternator 50 Ah
- Starting system thermal aid
- Turbocharged

### FOPS Cab

- Cab recirculating fan
- Front windshield washer and wiper
- Fully equipped instrument panel
- Heater
- Left Side door with lock
- Mirrors, exterior (2)
- Adjustable seat with seat belt and armrest
- Tinted glass
- Working lights, 2 front
- Tool box, external
- Cigarette lighter
- Ventilation openers
- Storage Compartment

## Optional Equipment

### Attachments

- 2,4 m, arm
- Hammer Hydraulic circuit
- Special buckets
- Ripper
- Hydraulic or mechanic quick coupler
- Hydraulic hammer
- Hammer brackets
- Auger
- Clamshell grab

### Other

- Air condition
- Fuel transfer pump
- Windscreen protection
- Overload warning device
- Boom and arm safety valves
- Beacon
- Automatic lubrication system
- Extinguisher
- Sun visor
- Customized colors



With a keen awareness of its international positioning, as a pre-requisite of success and growth in a truly global era, Cukurova Makina manages collaborations with leading international partners in Turkey and abroad aiming at long-term benefit of our customers, business partners and staff. These cooperative efforts aim to achieve the highest quality of products and service delivery by Cukurova Makina where it has presence in global.

**Notes:**

- 1-The products in this catalogue are CE marked, all safety measurements are taken through the Machinery Directives 2006/42/EC
- 2- Illustrations and data may differ from standard equipment.
- 3- Specifications are subject to change without notice.
- 4- See your ÇUKUROVA dealer for available options.